

HOW TO GET TO Venice

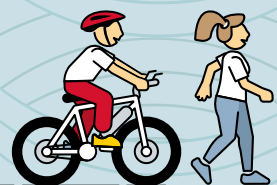


MARINA DI VENEZIA PUNTA SABBIONI

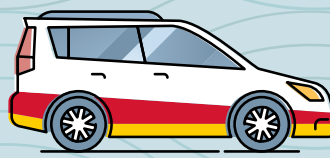
ONCE AT THE EXIT OF THE CAMPING VILLAGE, CONTINUE STRAIGHT ON VIA HERMADA UNTIL THE END, THEN TURN LEFT AND FOLLOW VIA FAUSTA TO THE TERMINAL (2 KM).



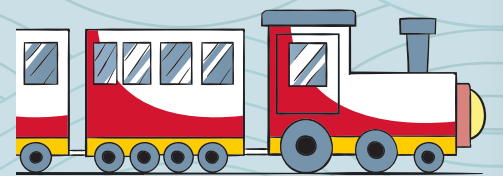
DIRECT BUS CONNECTION FROM THE BUS STOP NEXT TO THE CAMPING VILLAGE EXIT FROM THE END OF MAY TO THE BEGINNING OF SEPTEMBER



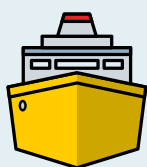
BY BIKE
OR
ON FOOT



BY CAR
PARKING
SUBJECT TO FEE



BY MINI-TRAIN FROM THE CAMPING VILLAGE FROM MID-JUNE TO THE BEGINNING OF SEPTEMBER



PUNTA SABBIONI VENICE



PUBLIC TRANSPORT

ONLY FERRY from Punta Sabbioni

- TRANSFERS EVERY 30 MINUTES
- TICKETS CAN ALWAYS BE PURCHASED DIRECTLY AT PUNTA SABBIONI BOARDING POINT.

• **FERRY RETURN TICKET**

• **TICKET (24H):** includes round trip to Venice + all public boat lines around Venice and the islands

• **MULTIPLE-DAY TICKETS** ARE ALSO AVAILABLE (2, 3, 7 DAYS)

PRIVATE TRANSPORT

(e.g. Il Doge, Marco Polo and others)

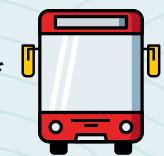
ONLY BOAT from Punta Sabbioni

- SEVERAL TRIPS PER DAY
- RETURN TICKETS AND ISLAND TOURS

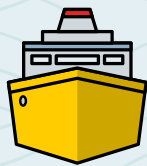
• **RESERVATIONS AT THE INFORMATION OFFICE.**
Guide included during the transport.



COMBINED TICKETS



ATVO
viaggiamo con voi



Actv

PUBLIC TRANSPORTS: BUS FROM CAMPING VILLAGE

+ FERRY FROM/TO VENICE

The ferry to Venice leaves in connection with the arrival of the bus.
TIMETABLES AND TICKETS ARE AVAILABLE AT THE INFORMATION OFFICE.

• **RETURN TICKET: BUS + BOAT**

• **DAILY TICKET (24H):** bus + ferry to/from Venice + all public boat lines around Venice and the islands

*Bus and mini-train service operates only in high season. Timetables are available at the Information Office.

KIDS

0-5 UP TO 5 YEARS OLD DO NOT PAY

>6 FROM 6 YEARS OLD PAY FOR BUS + BOAT (public transport)



DOGS



OUR FOUR-LEGGED FRIENDS ARE ALLOWED ON ALL TRANSPORTS AS LONG AS THEY ARE ON A LEASH AND MUZZLED

TICKETS AND TIMETABLES AT THE INFORMATION OFFICE



BUS TICKETS MUST BE PURCHASED IN ADVANCE AT THE INFORMATION OFFICE OR AT THE TICKET MACHINE ON THE CAMPSITE



TICKETS CANNOT BE PURCHASED ON THE BUS



PURCHASED TICKETS CANNOT BE REFUNDED UNDER ANY CIRCUMSTANCES



GONDOLAS AND WATER TAXIS ARE NEVER INCLUDED

REGISTRATION AND PAYMENT OF VENICE ACCESS FEE REQUIRED

€ 5,00 PER PERSON FROM 14 YEARS OLD AND FOR ALL THOSE VISITING VENICE BETWEEN 8.30 AND 16.00

ONLY FOR THE FOLLOWING PERIODS:

FROM 25th APRIL TO 5th MAY

EVERY WEEKEND IN MAY

EVERY WEEKEND IN JUNE EXCEPT 1st AND 2nd JUNE

THE FIRST TWO WEEKENDS IN JULY